



Taizhou JiaoGuang Lighting Co., Ltd.

1 Wei Er Road, Taizhou City, Zhejiang Province, China 318000

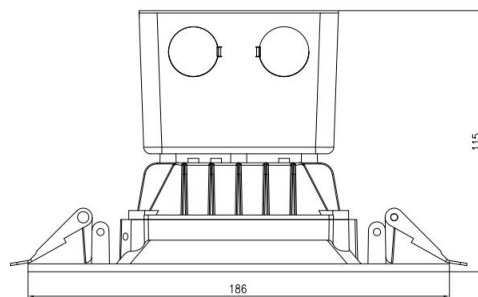
Tel:+86-576-89086611 Fax:+86-576-89086658

E-mail: salesdept9@jiaoguang.com; www.jiaoguang.com

LED SQUARE DOWN LIGHT WITH J-BOX



D716-N-XXXX



Size : 186x186x115mm(7.32x7.32x4.53")

Characteristics

Item Number	D716-N-XXXX
Description	6" LED Square Down Light With J-Box
Voltage	120V AC
Power	15W
Dimmable	Yes
CRI	>90
Lumens	920/930/1000/1040lms
Color	2700/3000/4000/5000K
Life time	50,000 hours
Certificate	ETL,Energy Star,Title 24,Lighting Facts,LM79,LM80

Features

- No need can, connected directly to conduit
- Die-Casting Alu.Square trim with good heat dissipation
- Comply with National Electrical Code
- ETL,Energy Star and Title 24 approved
- Mercury-free
- Instant-on light
- Wet location
- 50,000 hours at 70% lumen maintenance rated life
- CCT:2700-5000K
- Easy installation
- 5 years manufacturer warranty

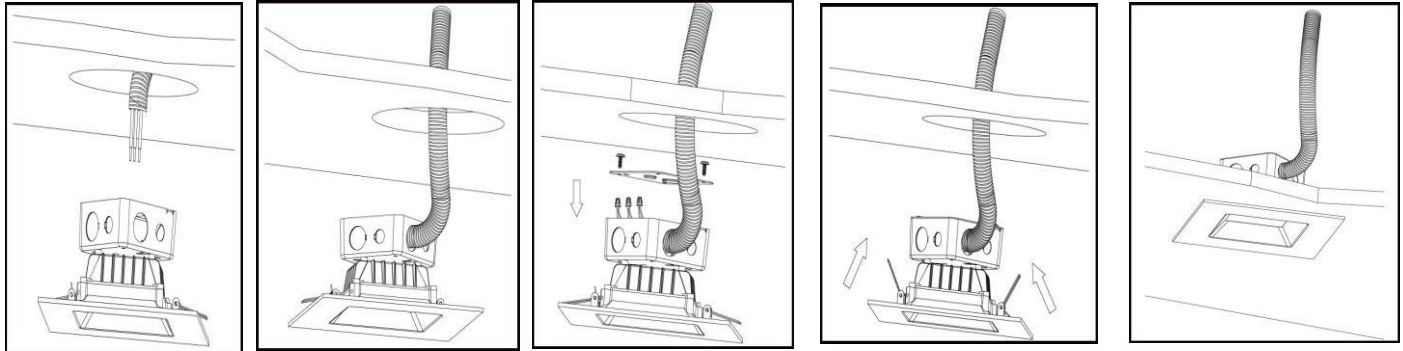
Application





Taizhou JiaoGuang Lighting Co., Ltd.
 1 Wei Er Road, Taizhou City, Zhejiang Province, China 318000
 Tel:+86-576-89086611 Fax:+86-576-89086658
 E-mail: salesdept9@jiaoguang.com; www.jiaoguang.com

Easy to Install in 4 Easy Steps:



1. Shut off power before installation, Cut a corresponding hole in the ceiling. A template is provided to assist with laying out the hole location. When running the supply wire(s), allow an additional 18 in. of wire at each installation in order to make the electrical connections on the room side of the ceiling hole
2. Remove the Junction Box Screw(s) holding the Junction Box Cover. Pass the supply wire(s) through the appropriate knockout hole on Junction Box. Make the electrical connections to fit inside Junction Box following the ELECTRICAL CONNECTIONS. Make sure all connections are secure, tuck all wires inside Junction Box and reinstall Junction Box Cover using Junction Box Screws
3. Press the top portion of the Remodel Clips against the side of the Housing Assembly.
4. Push the Housing Assembly with the top side of the Remodel Clips through the hole until tight. Continue to push the Housing Assembly until the fixture snaps into place with the trim tight against the ceiling surface..

Packaging

Size	Carton Size	Pcs/CTN	N.W.	G.W.
6"	42x38x40.5cm/16.55x14.96x15.95"	12	9kgs/19.8lb	10kgs/22.0lb

Production & Facilities

